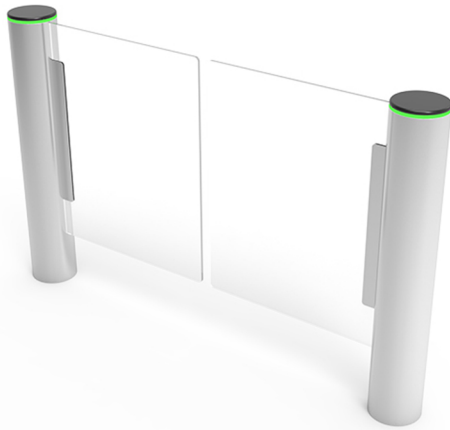




# P- SWING GATE

RMC-DPS-900



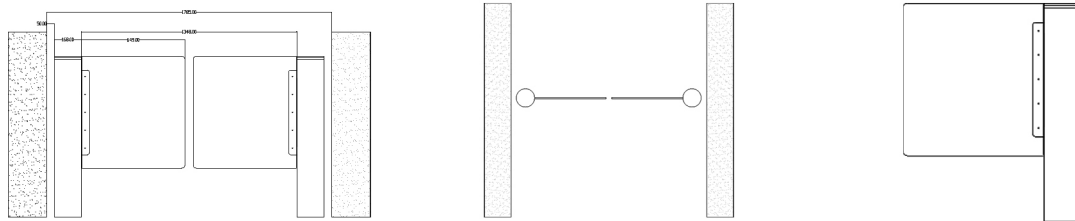
The RMC-DPS-900 Handicap Swing Gate is designed specifically for use of physically challenged on wheelchair or for material movement. These gates are used in combination with either Tripod Turnstiles or Speed Gates. These are ergonomically & aesthetically designed for easy movement in access controlled environment.

The designed concept is such that it offers the scope for customization depending on the application that it is desired for. The extent of Ravel Movement Control's dedication is more than explicit to engage with its customer's ideas and an architect's desire to deliver complimenting designs to their architecture is in its complementing products and solutions.

The Pedestrian Handicap Swing Gate is a combination of well-crafted Stainless steel and faux glass panels. The design is engaging both in terms of its appearance & safety.



## Dimension



( All dimensions are in mm )



# P- SWING GATE

RMC-DPS-900

DESCRIPTION	PARTICULAR
Make	Ravel Movement Control
Model	RMC-DPS-900
Material of Construction	304 Stainless steel, Brushed hairline finish
Housing Material Thickness	2.0mm
Housing Dimension (in mm)	Dia 168 X Height 1000
Standard Flap Dimensions (in mm)	700 Height X 425 Width X 15 Thickness
Wide Flap Dimensions (in mm)	Polycarbonate Glass
Passage or Aisle Width	850mm with a variable gap of 50mm or as desired between glass wings.
Mains	AC 230V $\pm$ 10%, 50 Hz
Drive	24/36V Servo Motor
Flap Swing Speed	0.5 Seconds (adjustable)
Hold Open Time	5 sec (adjustable)
Direction of Operation	Bi-directional, can also be programmed to Uni-directional
Power Consumption (in watts)	200W
Working Temperature	-10°C to +50°C
Condensation	<90% no condensation
Throughput	40 Persons or more / Min. excluding card validation time.
Signal	Dry contact
Duty Cycle	100%
Application	Indoor / Outdoor
Ingress Protection	IP54
Emergency/Safety	Free passage when power off
MCBF	More that 10 Million cycles
Noice during operation	50db
Weight of the Product	70kg/unit

