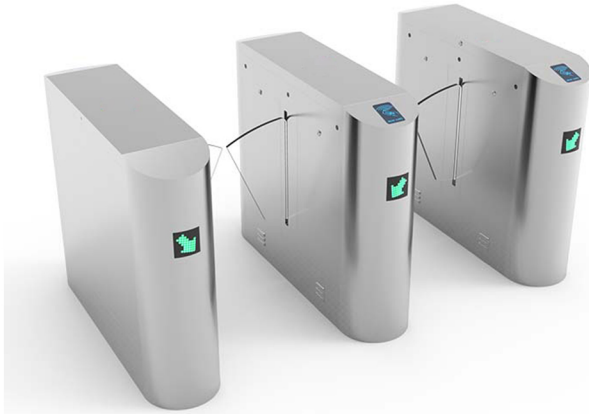




RETRACTABLE SPEEDSTILE

RMC-PRS-30B



The RMC-PRS-30B Retractable Type Speedstile is ergonomically & aesthetically designed & built thus offering an alluring design of sophistication. The designed concept is such that it offers the scope for customization depending on the application that it is desired for.

The extent of Ravel Movement Control's dedication is more than explicit in its complementing products and solutions. It thus offers its customer flexibility in adopting to new ideas and aids in an architect's desire to deliver unique designs to their architecture.

The Retractable Type Speedstile is a combination of well-crafted Stainless steel and faux glass panels. The design is engaging both in terms of its appearance, space occupation, the pedestrian logic and safety. The Cabinet is 300mm wide throughout its length of 1200mm.

RMC-PRS-30B Retractable Speedstile has at its heart, a DC Drive that offer several years of trouble-free operation. The reliability of the gate system of an MCBF of ≥ 5 Mil., Cycles is proof of the ruggedness. The Speedstile is high on pedestrian safety as well with the 3 Pairs of Sensors to determine various pedestrian access logics and build in the extra safety.

The RMC-PRS-30B Speedstile is offered with an aisle width of 550mm for regular pedestrian access and 900mm for wheelchair or material access. These gates may also be offered in combination of standard and wide lanes depending on a requirement.





RETRACTABLE SPEEDSTILE

RMC-PRS-30B

DESCRIPTION	PARTICULAR
Make	Ravel Movement Control
Model	RMC-PRS-30B
Material of Construction	304 Stainless steel, Brushed hairline finish
Housing Material Thickness	1.5mm
Housing Dimension (in mm)	Length 1200 X Width 300 X Height 1000
Standard Flap Dimensions (in mm)	520 Height X 250 Width X Thickness 15
Wide Flap Dimensions (in mm)	520 Height X 425 Width X Thickness 15
Flap Material	Polycarbonate Glass
Passage or Aisle Width	500mm & 850mm with a variable gap of 50mm or as desired between glass wings for a Standard Lane & Wide lane respectively.
No of Infrared sensors	3 Pairs
Location of sensors	On top
Drive	24V DC Motor
Flap Speed	0.5 Seconds (adjustable)
Hold Open Time	5 sec (adjustable)
Direction of Operation	Bi-directional, can also be programmed to Uni-directional
Power	24V
Power Consumption	40W
Working Temperature	` -10°C to +50°C
Condensation	<90%, No condensation
Throughput	30 Persons or more / Min. excluding card validation time.
Signal	Dry contract
Duty Cycle	100%
Application	Indoor / Outdoor
Ingress Protection	IP54
Emergency/Safety	Free passage when power off
MCBF	More than 5 Million cycles
Noice during operation	50db
Weight of the Product	70kg/unit

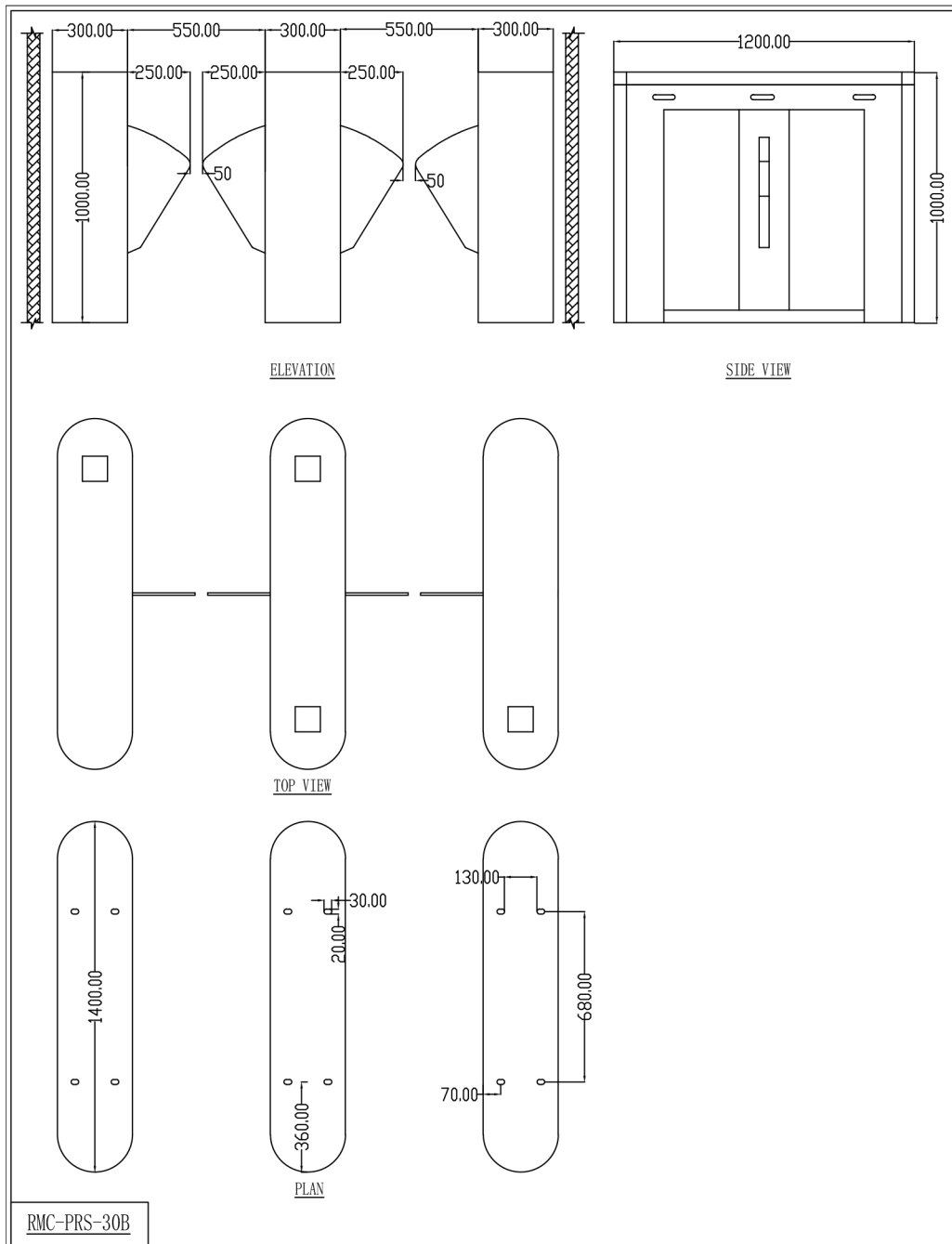




RETRACTABLE SPEEDSTILE

RMC-PRS-30B

Dimensions



(All dimensions are in mm)